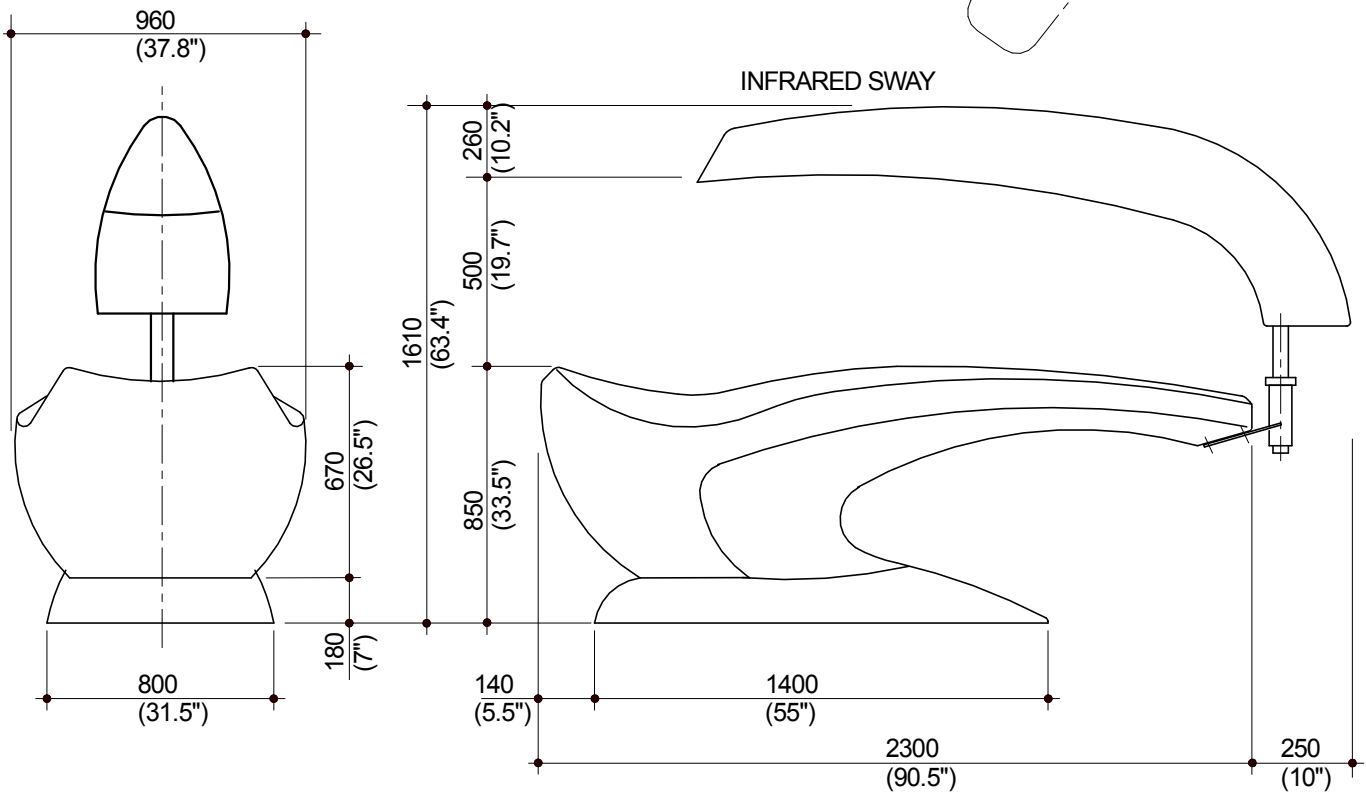
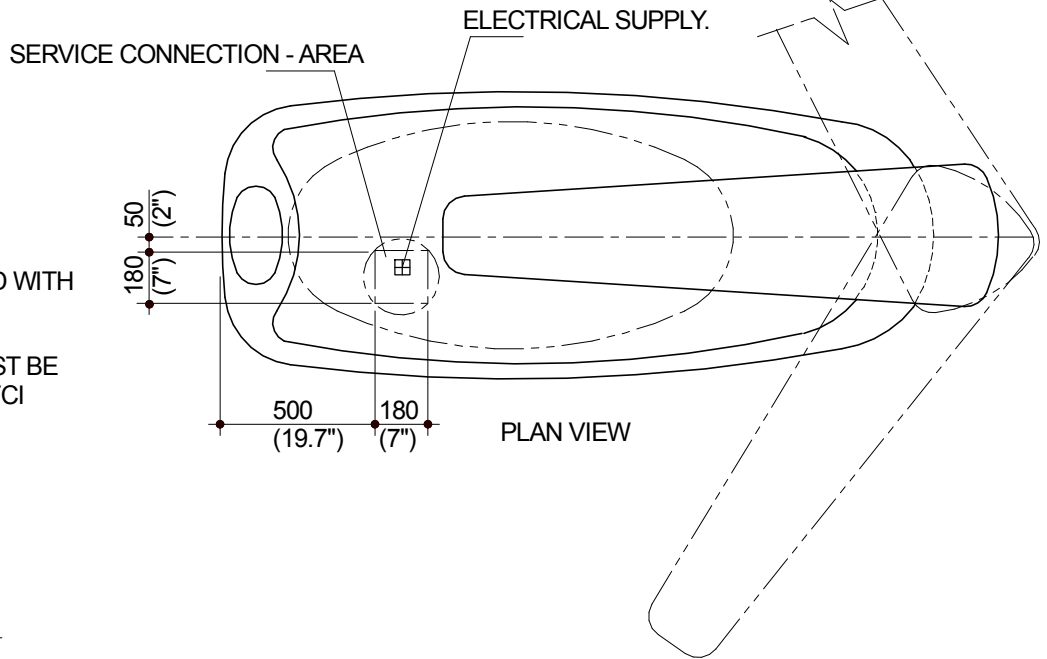


LEGEND:

⊞ ELECTRICAL SUPPLY.

NOTE: SOFTIME SUPPLIED WITH 2 METRE CABLE.

ELECTRICAL SUPPLY MUST BE PROTECTED VIA ELCB/GFCI



NOTE: MAIN BODY, SEPERATES FROM BASE, INFRA-RED SWAY REMOVES FROM BRACKET. TO ALLOW ACCESS THROUGH STANDARD DOOR OPENING

SERVICES REQUIRED:

ELECTRICAL: 10 Amp SINGLE PHASE DEDICATED SUPPLY VIA ELCB/GFCI

SPECIFICATION: - 1.

- WATERBED
- VIBRATION

SPECIFICATION: - 2.

- WATERBED
- VIBRATION
- INFRARED SWAY

- 230 VOLT, 50 Hz, SINGLE PHASE
- 120 VOLT, 60 Hz, SINGLE PHASE

HYDROCO (AUST) PTY LTD
SEAFORD VICTORIA AUSTRALIA

ph.+61 3 8770 4000 www.hydroco.com fax.+61 3 9773 6122

SOFTIME -SPECIFICATION -1

SOFTIME -SPECIFICATION -2

DRG No.ST-INST-003