

Suzi™

Hydrotherapy for the head



HYDRO^{co}
KNOW THE DIFFERENCE™



High-tech, high-touch

Suzi can deliver hydrotherapy treatments to your spa, salon, medical, fitness or wellness facility – easier than you ever imagined!

Suzi has been designed to provide an incredible experience by combining *high-tech* with *high-touch* using a range of pre-programmed treatments to compliment the hands-on interaction by the operator.

Suzi is not simply a shampoo machine waiting to wash and condition hair – or assist in the rinsing of color and perm solution – she can do so much more. With a little passion and a desire to provide your clients with experiences and sensations out of the ordinary, you will discover how easy it is to develop such a range of services with **Suzi**!

Suzi ensures that your clients receive a totally unique experience. Warm high pressure water jets massage the head, scalp and neck creating a deep, therapeutic treatment.

Treatments

Treatments may include *aromasteam infusion*, *hydrocolor lighting*, *thermal contrasting* and *shirodhara*. Compliment these with the human touch, and you can personalize each and every treatment to both you, and your clients complete satisfaction.



New hydrotherapy services

Flexible and functional

The stylish design of **Suzi** has been with both the client, and operator, in mind. All operation is at the touch of a button, and the LCD panel displays operational steps which prompt the operator throughout the treatment.

A purpose-built, motorized recline chair allows for total client comfort throughout the treatment – and also allows the operator a functional workspace behind the client to provide additional head, scalp and shoulder massage when in the upright position.

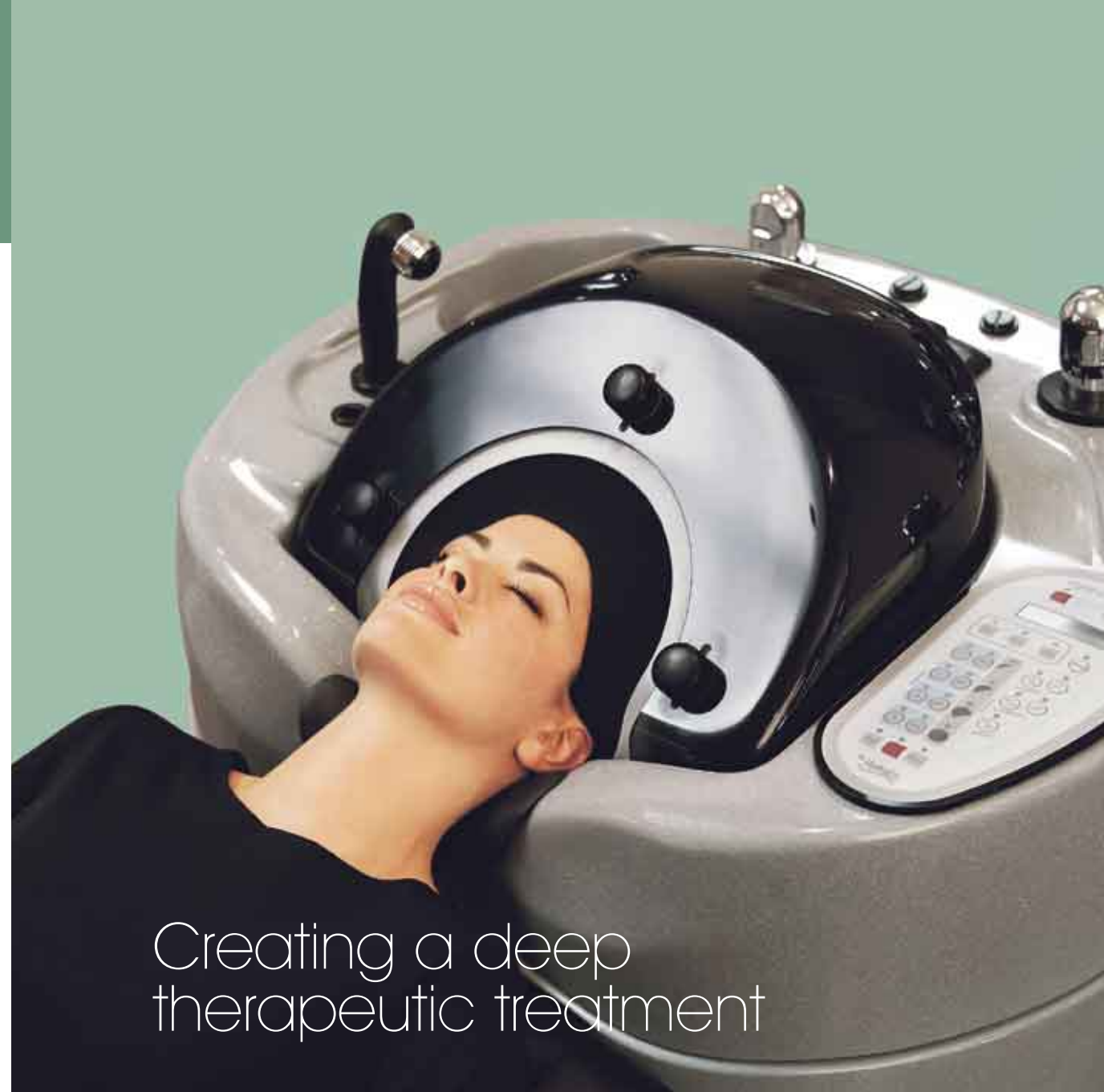
Controlled levels of shampoo and conditioner may be automatically introduced during the operational program. Motorized spray bars, with strategically positioned spray jets, ensure thorough and even cleansing. In addition, four high-pressure jets pulse water over the scalp and back of the neck to create a luxurious, deep, therapeutic scalp treatment.

Full Service

Suzi's 'Full Service' program can automatically shampoo and condition hair in 3 minutes. The 3 minute Full Service program is an ideal program for the washing of oily hair following a facial and scalp massage – leaving the client feeling clean and invigorated.

Spa Pack

Suzi's 20 minute 'Spa Pack' treatment will create the entire pampering, de-stressing experience, that will not be easily forgotten. The Spa Pack treatment is the ultimate in *high-tech, high-touch* treatment, with a combination of hair, head and body treatments lasting up to 20 minutes.



Creating a deep
therapeutic treatment

Body treatments



Massage in a treatment-pack during aromasteam operation.



Spa Pack treatment prompts the massaging of shoulders ...



... arms



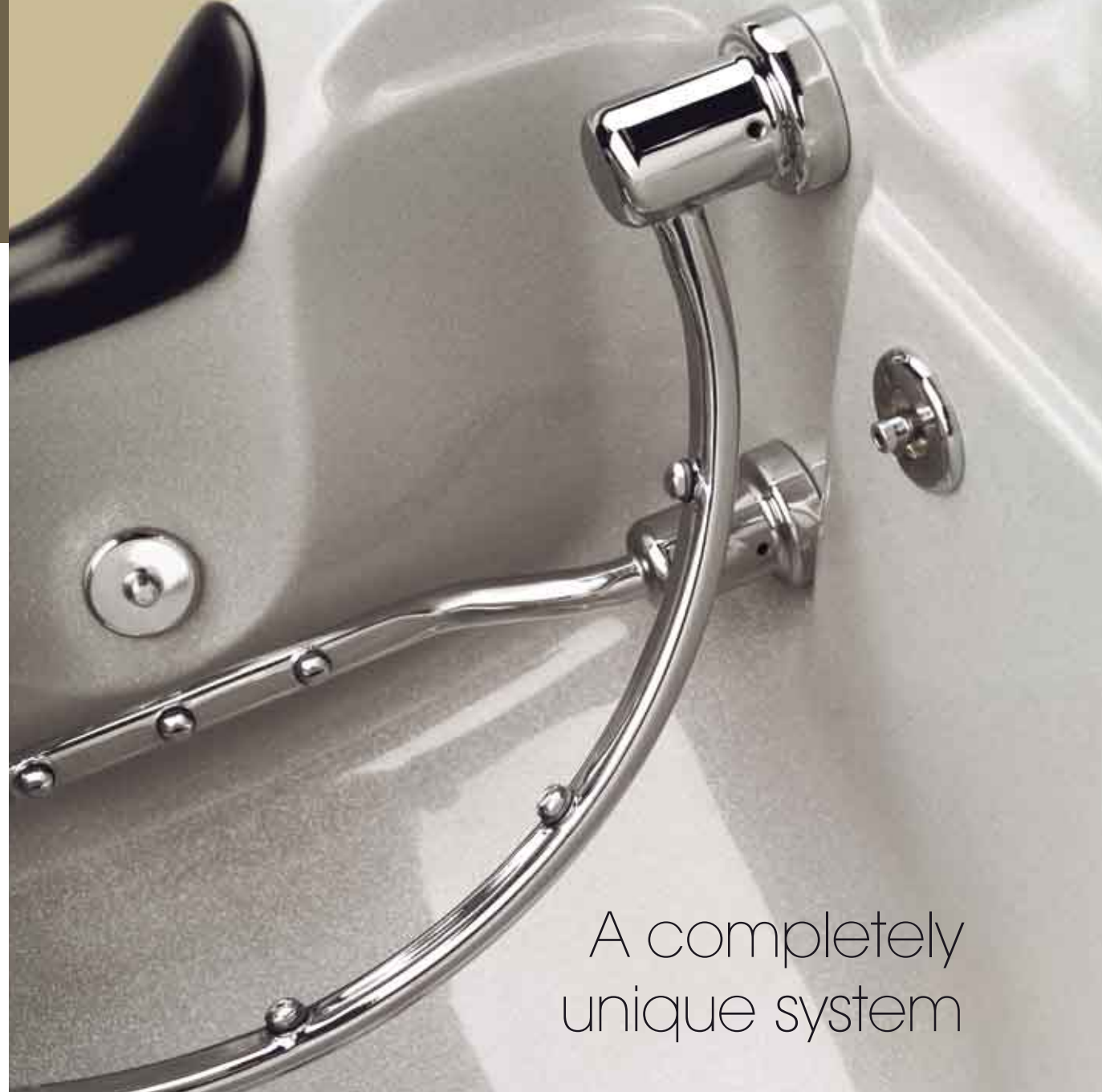
... feet



... and lower legs.



Mist a fragrant spritz whilst the client is relaxed, covered and in a peaceful state of mind.



A completely
unique system

Innovative engineering

By design, **Suzi** is an 'easy to operate' system, that enables a person to be well skilled in it's general operation within hours of training. **Suzi** is an attractive treatment to many of those potential clients, that may be reluctant to disrobe in order to receive a legitimate spa treatment.

Suzi may be located in virtually any area of a facility, behind closed doors, or in open areas, and in most cases requires no special plumbing or electrical – general available services usually suffice.

Suzi's programming enables repeatable and accurate operation by the user. These programs automatically manage water usage, and discipline the operator accordingly. The use of electronic programming enables **Suzi's** water consumption to be comparable to that of a general hand shower operation.

Shirodhara

One of the most sought after spa treatments in Europe and the Americas¹. Originating in India, Shirodhara is the application of a continuous stream of warm oil to the middle of the forehead (the third eye) and is then massaged back into the hair and scalp to bring clarity to the mind and recharge the body.

¹ Melanie Sachs The art and practice of shirodhara. Diamond Way Ayurveda 1998.



Innovative applications

Additional therapies

Hydrocolor lighting

The rotation of light through the colors of the solar spectrum benefits the body by rebalancing, calming and soothing the senses for both the client and operator.

Thermal contrast

Contrasting water temperature assists in stimulating the body's nervous system, releasing hormones within the adrenal and endocrine glands to give a feeling of vitality and energy.

Steam

Aromasteam infusion combines moist steam infusion with aromatherapy. Steam stimulates the absorption of hair treatments into the cuticle and increases efficiency. The impact of steam infusion is a total feeling of relaxation and rejuvenation for the client.

Visit www.hydroco.com to find out more about **Suzi**.



Superior design and functionality

HydroCo Suzi™

SAFETY STANDARDS

UL	North America
cUL	Canada
CE	European Community

COLOR OPTIONS

SUZI

Silver Shimmer	Standard
Pearl Shimmer	

SUZI CHAIR

Black

Custom colors available upon request

Note: Preparatory Electrical & Plumbing specification sheets available upon request. Manufacturer reserves the right to alter specifications without prior notification.

HydroCo (Australia) Pty Ltd
22 Pascal Road, Seaford
VIC 3198 Australia
t +61 3 8770 4000 f +61 3 9773 6122

HydroCo (USA)
438 Amapola Ave, Suite 130
Torrance, Los Angeles
CA 90501 USA
t +1 310 381 0071 f +1 310 381 0072

HydroCo (Europe)
10 Greycoat Place
London UK, SW1P 1SB
t +44 207 960 6070 f +44 207 960 6100

info@hydroco.com
www.hydroco.com

HYDROCO
KNOW THE DIFFERENCE™ 