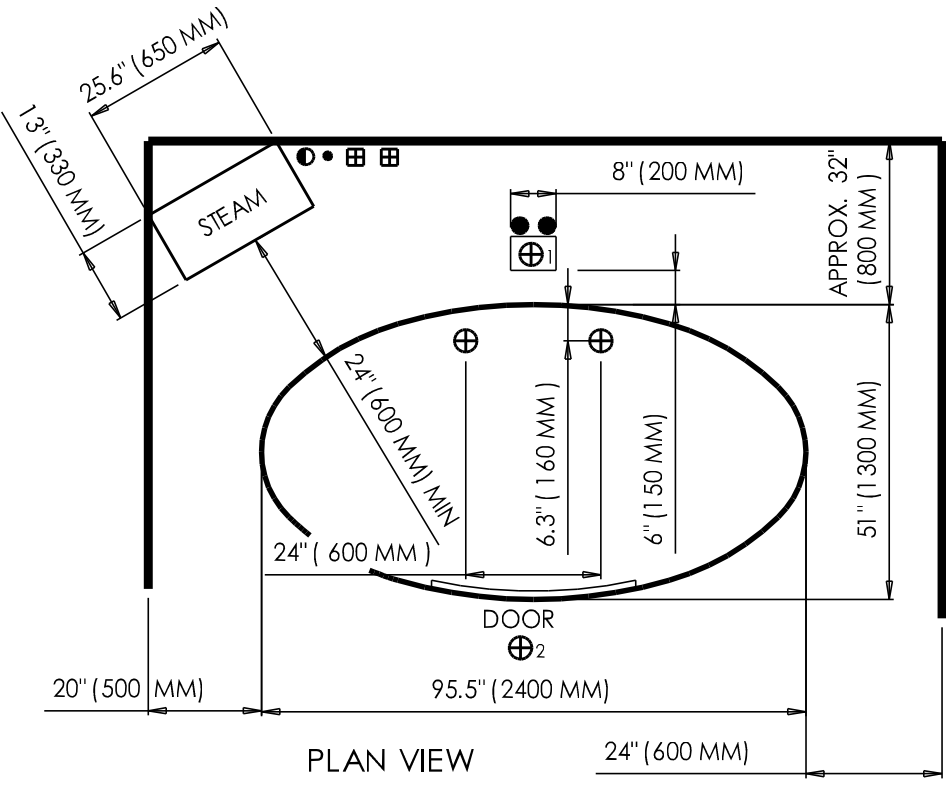
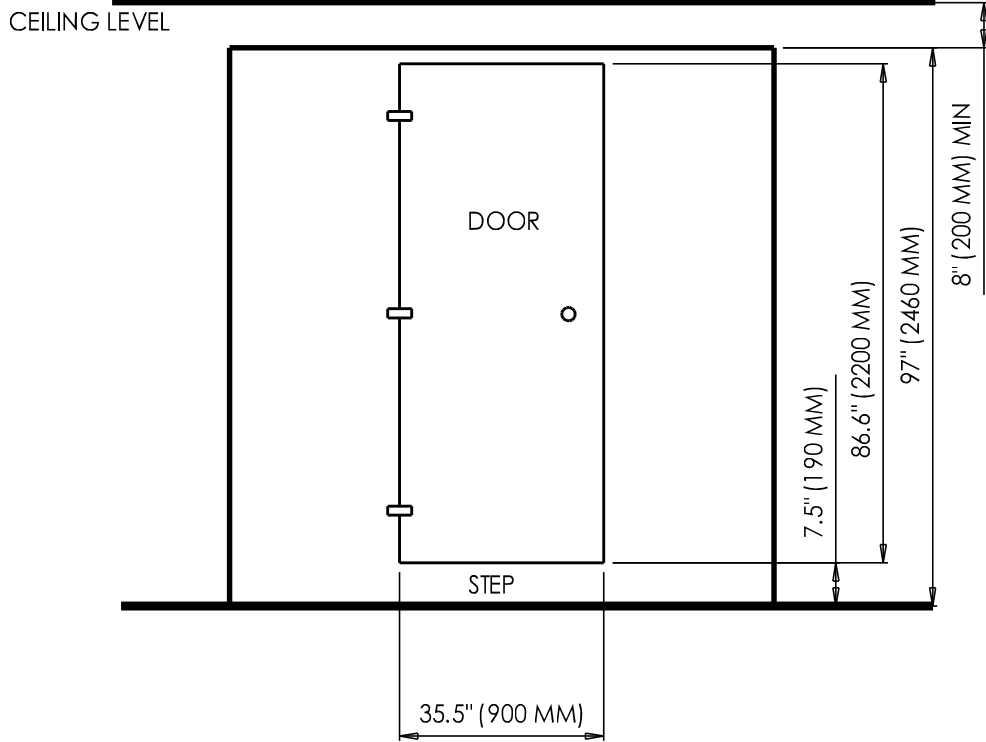


NOTE: THIS IS TO BE USED AS A GUIDE ONLY. THE MANUFACTURER RESERVES THE RIGHT TO AMEND SPECIFICATIONS WITHOUT PRIOR NOTICE



PLAN VIEW



FRONT VIEW

LEGEND

- ELECTRICAL CABLES
- HOT AND COLD WATER
- FLOOR SINK / DRAIN - 2" (50 MM) TRAPPED
- DRAIN GRATE IN FRONT OF DOOR

DIRECT THE 2 DRAINS FROM LUSAR ROOM INTO FLOOR DRAIN

- DRAIN - (STEAM GEN) 1 1/2" (40 MM)

- COLD WATER SUPPLY 1/2" (12 MM) (STEAM GEN)

ELECTRICAL

- 1 X 40 AMP DEDICATED 208 - 240 VOLT - SINGLE PHASE 50 / 60 Hz SUPPLY PROTECTED BY GFCI (EARTH LEAKAGE CIRCUIT BREAKER)
- 1 X 15 AMP DEDICATED 100 / 120 OR 208 / 240 VOLT - SINGLE PHASE 50 / 60 Hz SUPPLY PROTECTED BY GFCI (EARTH LEAKAGE CIRCUIT BREAKER)

PLUMBING

- 3/4 " (19 MM) HOT AND COLD WATER SUPPLY 43.5 - 100 PSI (3 - 7 BAR)
- DRAIN - 2 " (50 MM TRAPPED DRAIN) FLOOR SINK RECOMMENDED

NOTE

- LUSAR HEIGHT CAN BE CUSTOM ORDERED UP TO 8" (200 MM) SHORTER IF REQUIRED

20 april 2007



" LUSAR " Lay-out

HydroCo (Australia) Pty. Ltd. HydroCo (USA)
 +61 3 8770 4000 - PHONE 31 0.381.0071 - PHONE
 +61 3 9773 61 22 - FAX 31 0.381.0072 - FAX