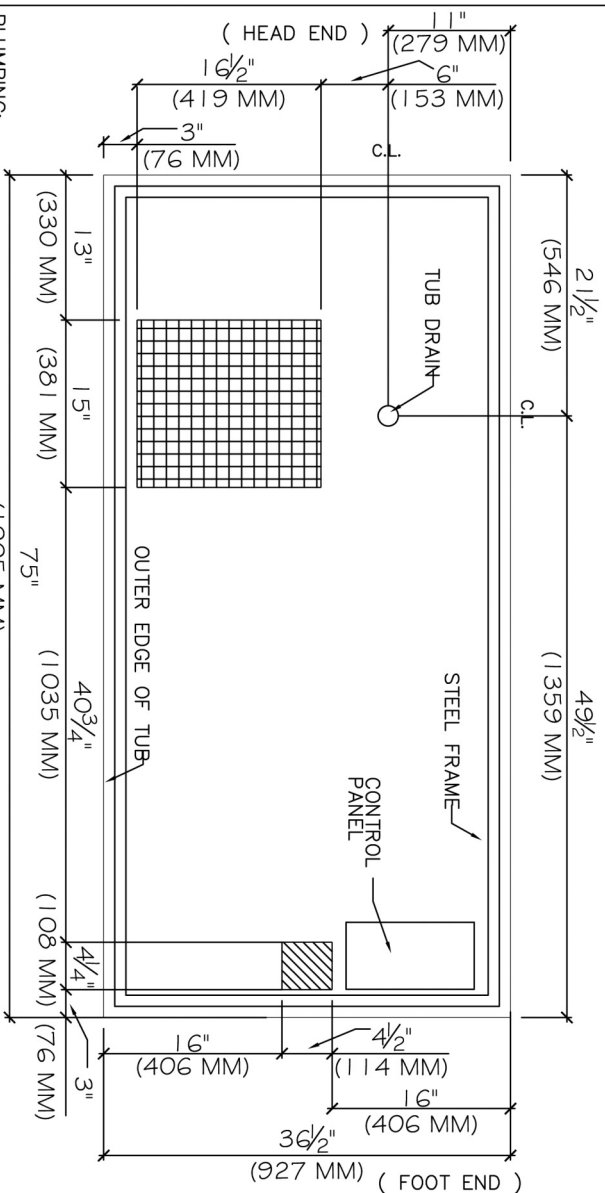


# LAYOUT Specifications

## HYDROTONE L TUB

**NOTE:** THIS IS TO BE USED AS A GUIDE ONLY. THE MANUFACTURER RESERVES THE RIGHT TO AMEND SPECIFICATIONS WITHOUT PRIOR NOTICE



- PLUMBING:**
- 3/4" HOT & COLD WATER SUPPLY LINES
  - MAXIMUM PRESSURE: 145 PSI
  - 2" FLOOR DRAIN
  - 1/2" WATER SUPPLY LINES AND 1 1/2" DRAIN (WILL RESULT IN SLOW FILL & DRAIN OF) TUB
- ELECTRICAL:**
- 208 - 240 VOLT 50/60 HZ. 20 AMP SINGLE PHASE ELECTRICAL SUPPLY REQUIRED
  - INSTALL ON DEDICATED LINE WITH DISCONNECT ALL POLE CLASS "A" GFCI. THE SBSG MODEL # LC220 -D RECOMMENDED
  - ALTERNATIVE MODELS HAVE DEMONSTRATED NUISANCE TRIPPING
  - OBTAIN SBSG (GFCI) GROUND FAULT CIRCUIT INTERRUPTER FROM ELECTRICAL SUPPLIER OR HYDROCO
  - GFCI - INTERNATIONALLY KNOWN AS (ELCB) EARTH LEAKAGE CIRCUIT BREAKER

- LEGEND:**
- FLOOR DRAIN LOCATION (UNLESS INCLUDED DOWN TO FLOOR DRAIN OR SINK)
  - FLOOR TRAP IS NOT USED AND TUB DRAIN CONNECTS TO FLOOR DRAIN OR SINK
  - WATER LOCATION FOR INCOMING HOT & COLD
- NOTE:**
- 2" (50 MM) CLEARANCE IS AVAILABLE UNDER TUB FOR PLUMBING & ELECTRICAL ROUTING
  - METAL PLUMBING PIPES & FITTINGS MUST NOT CONTACT TUBS METAL SUPPORT FRAMEWORK
  - INSTALL IN ACCORDANCE WITH LOCAL AND NATIONAL CODE REQUIREMENTS
  - SEE HYDROTONE INSTALLATION & USER GUIDE (PROVIDED) BEFORE COMMENCING INSTALLATION OF TUB

Updated: 20 October 2004